

INFORMAZIONI TECNICHE
TECHNICAL INFORMATION / ТЕХНИЧЕСКИЕ ХАРАКТЕРИСТИКИ

FINITURE / FINISHES / ОТДЕЛКИ 142

MARMI, CERAMICHE E METALLI / MARBLES, CERAMICS AND METALS / МРАМОР, КЕРАМИЧЕСКИЙ, МЕТАЛЛ 143

TESSUTI / FABRICS / ТКАНЬ 144

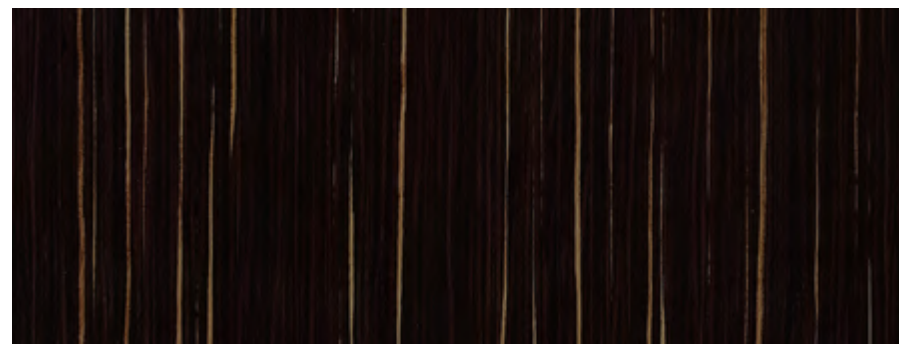
ECOPELLE / FAUX LEATHER / ИСКУССТВЕННАЯ КОЖА 148

AMBIENTI / AMBIANCES / ПРЕДЛОЖЕНИЕ 151

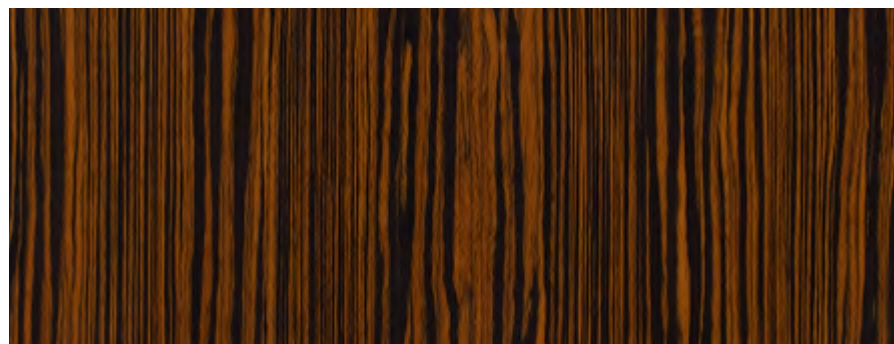
ELEMENTI SINGOLI / SINGLE ITEMS / ОТДЕЛЬНЫЕ ЭЛЕМЕНТЫ 157

ESSENZE - WOOD TYPES - ПОРОДЫ ДРЕВЕСИНЫ

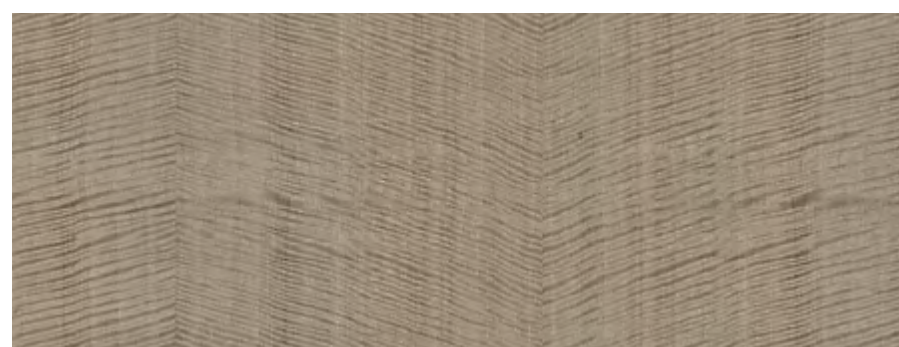
È possibile avere le finiture in essenza in versione 100% lucido spazzolato o in versione opaco - It is possible to have the wood finishes in a 100% glossy brushed or matt version
 Возможна отделка дерева в матовом или матовом исполнении на 100%



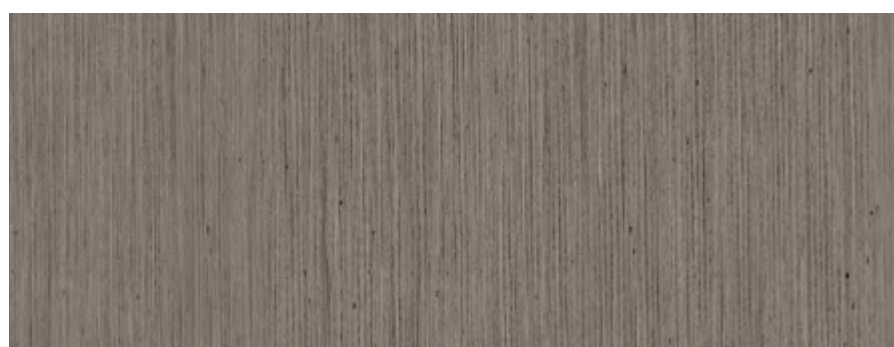
EBANO - EBONY - ЧЕРНОЕ ДЕРЕВО



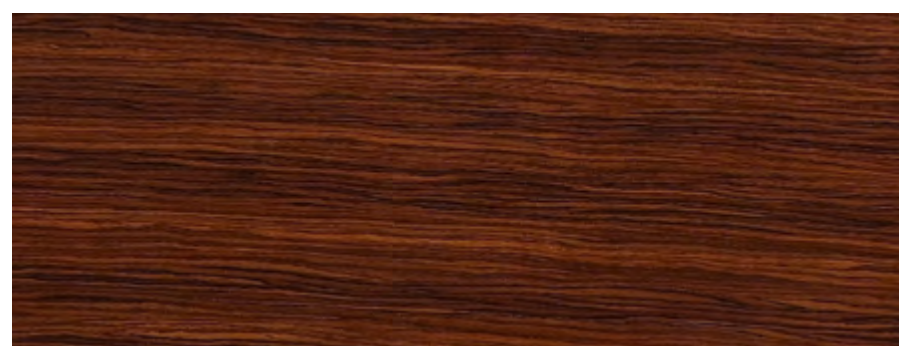
MACASSAR



ANEGRÉ FRISÉ



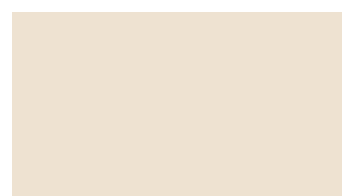
ROVERE GRIGIO - GREY OAK - Серый дуб



PALISSANDRO - ROSEWOOD - РОЗОВОЕ ДЕРЕВО

FINITURE LACCATE - LACQUERED FINISHES - ОТДЕЛКИ

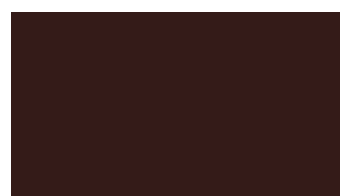
È possibile avere le finiture laccate 100% lucido spazzolato o in versione opaco - It is possible to have the lacquered finishes in a 100% glossy brushed or matt version
 Возможно лакирование 100% лака или в матовой версии



TARTUFO BIANCO



GRIGIO TORTORA



TORBA



CENERE



CAFFÈ

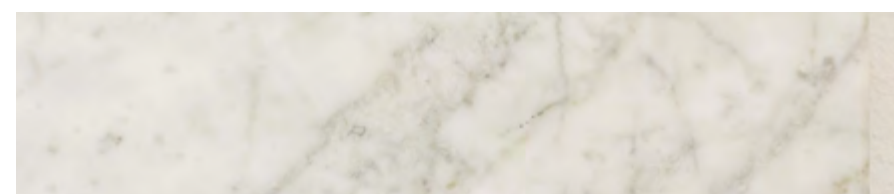
MARMI - MARBLE TYPES - МРАМОР



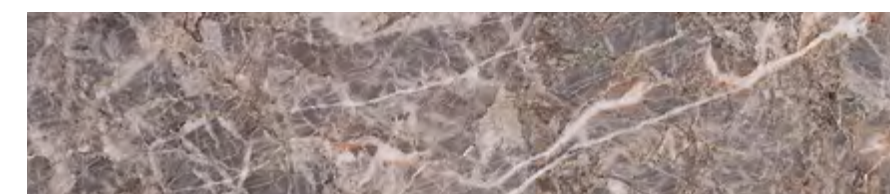
EMPERADOR SCURO



CALACATTA VAGLI



BIANCO CARRARA



FIOR DI PESCO

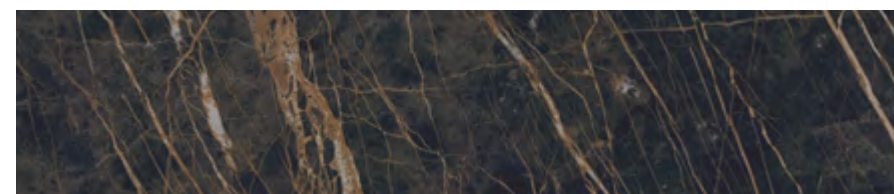
CERAMICA - CERAMIC - КЕРАМИЧЕСКИЙ



SODALITE BLU

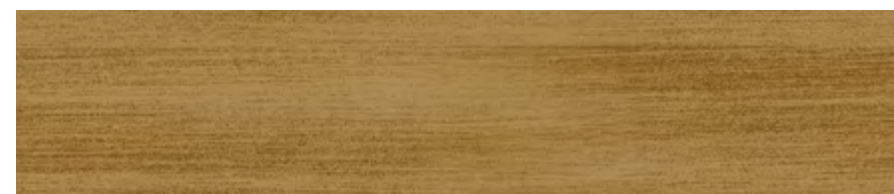


CALACATTA ORO



SAINTE LAURENT

METALLO - METAL - МЕТАЛЛ



FINITURA TIPO OTTONE



CHAMPAGNE



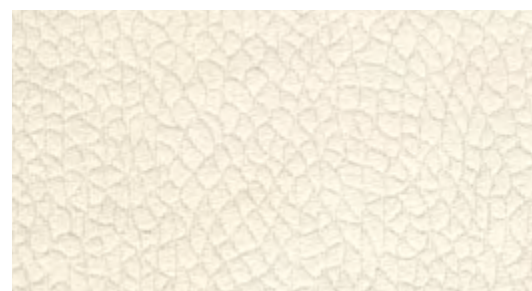
TITANIO



PLOMBO

TESSUTI - FABRICS - ТКАНИ

BORA TERRA | Classe 2 | H. 140
100% PL



Col 01



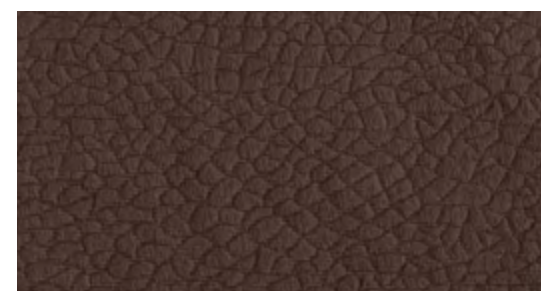
Col 04



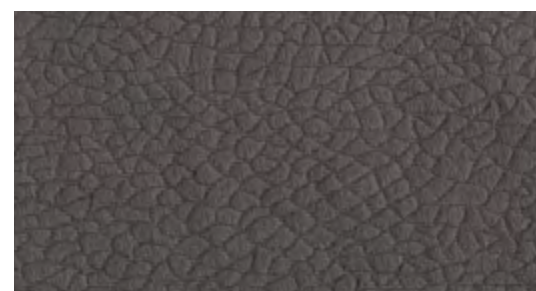
Col 34



Col 64

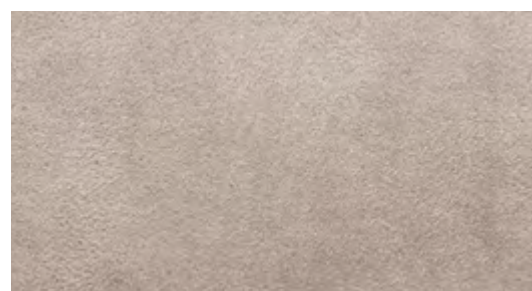


Col 84

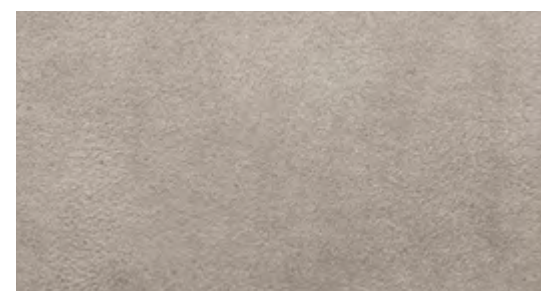


Col 36

FIORANO | Classe 2 | H. 280
100% PL



Col 101

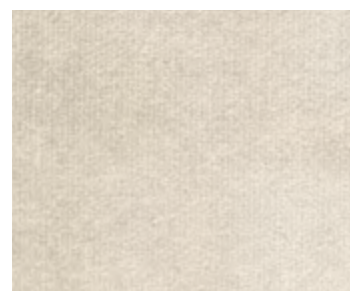


Col 103



Col 104

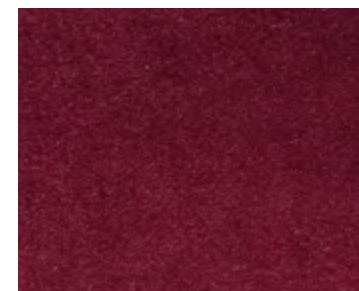
AMSTERDAM | Classe 2 | H. 140
100% PL



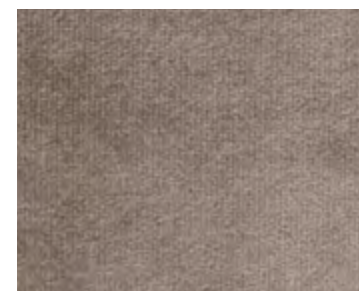
Col 04



Col 49



Col 63



Col 64



ADONE | Classe 2 | H. 140
100% PL



Col 01

APUS | Classe 2 | H. 140
100% PL



TM01/121



TM01/06

SERENA | Classe 2 | H. 140
70% PL, 15% Nylon, 15% PC



Col 04



Col 44

BORA PLAIN | Classe 2 | H. 140
100% PL



Col 84



Col 36

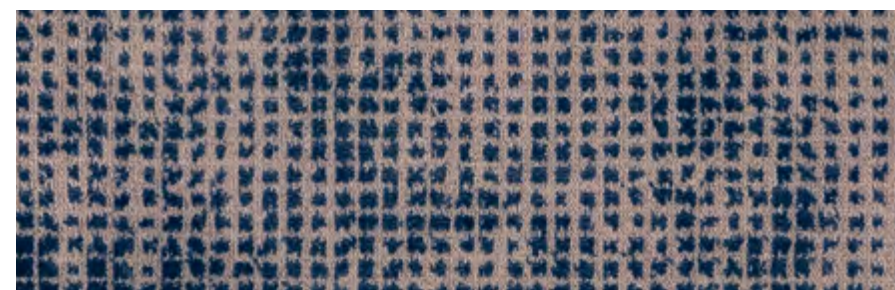
TESSUTI - FABRICS - ТКАНИ

5500 | Classe 2 | H. 140
100% PL



Col 05

MUSIC | Classe 2 | H. 140
66% PL, 34% Viscosa



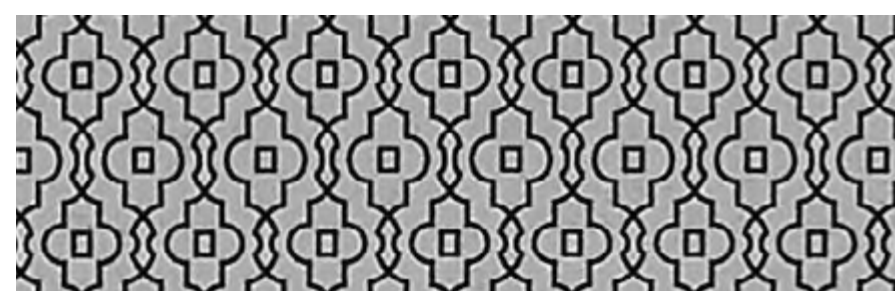
Col 16

8336 | Classe 2 | H. 140
100% PL



Col 04

5043 | Classe 2 | H. 140
100% PL



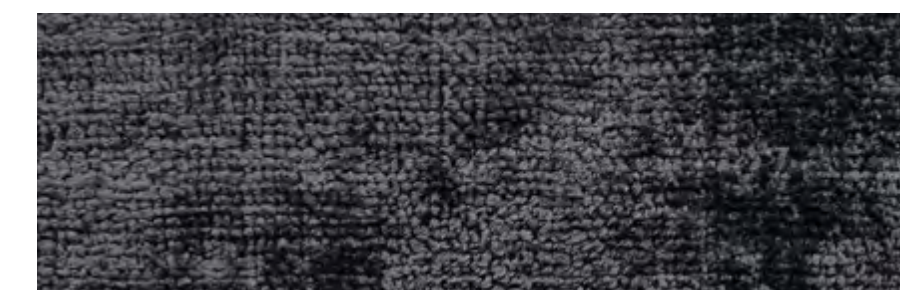
Col 04



KELLY | Classe 3 | H. 140
66% AK, 34% PL



Col 16



Col 56

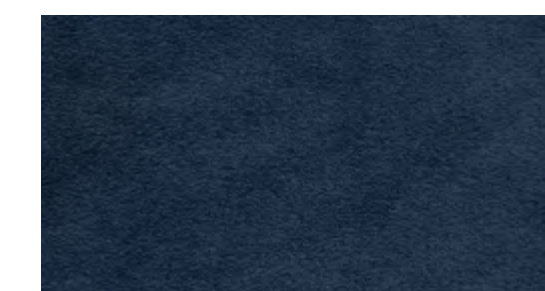
CARINA | Classe 3 | H. 140
100% PL



TM4/170



TM4/45



TM4/09

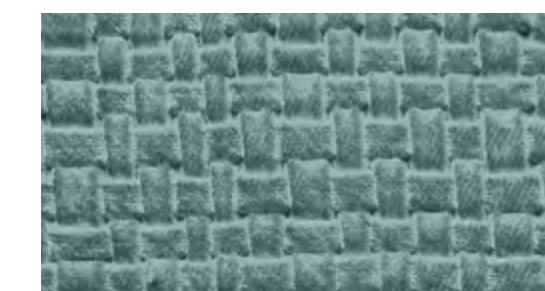
5434 | Classe 3 | H. 140
100% PL



Col 01



Col 05



Col 18

PIANO | Classe 3 | H. 140
66% PL, 34% Viscosa



Col 54

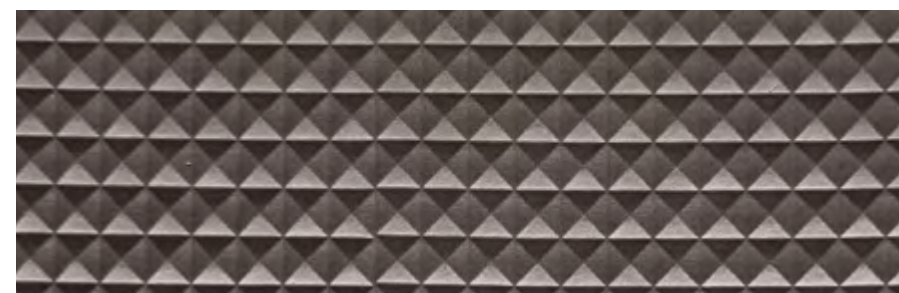
ECOPELLE - FAUX LEATHER - ИСКУССТВЕННАЯ КОЖА

LOFT 5251 | Classe 2 | H. 140

73% cf, 24% PES, 3% PU



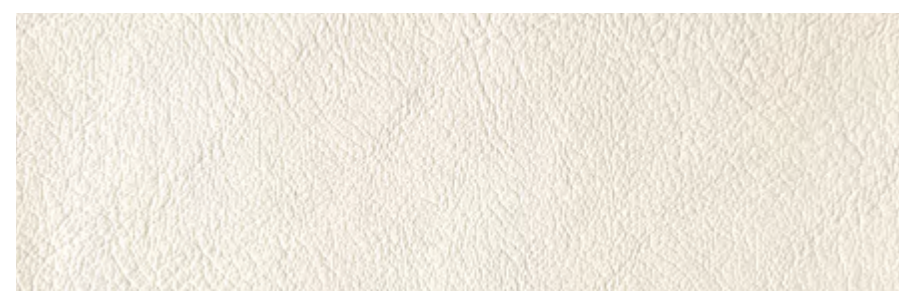
Col. 73 Champagne



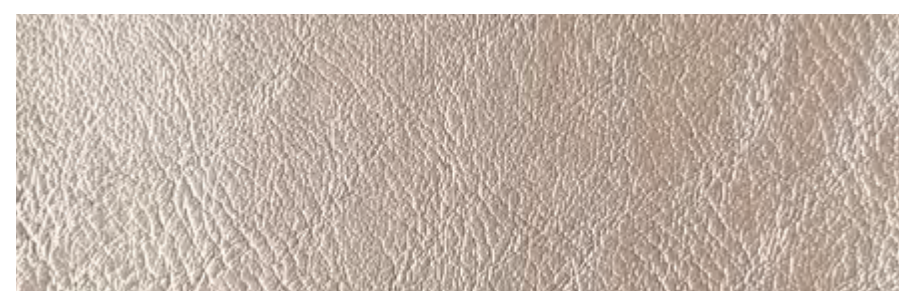
Col. 62 Metal

ECOPELLE MODA | Classe 2 | H. 140

71% PVC, 26% PL, 3% PU



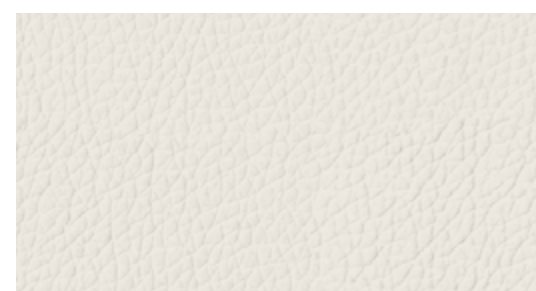
X347.02



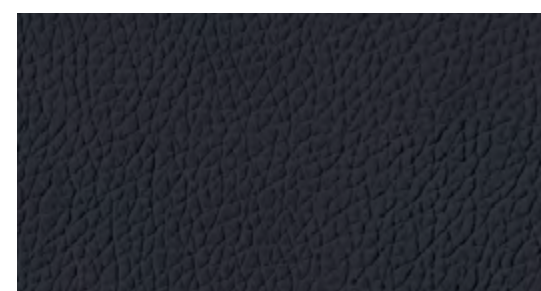
X347.06

SUPERSOFT | Classe 2 | H. 140

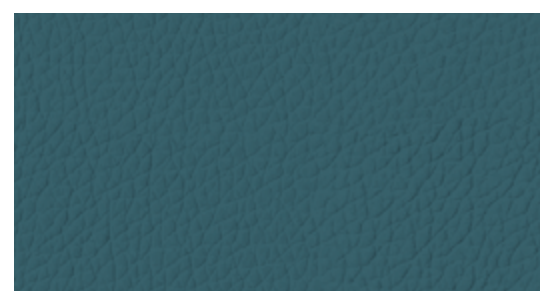
7,87% PU, 70,21 PVC, 21,92 PL



637/27



637/28



637/14



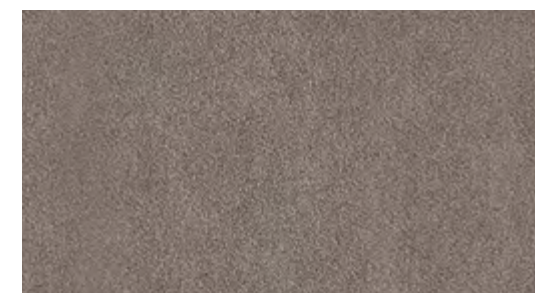
ECOPELLE - FAUX LEATHER - ИСКУССТВЕННАЯ КОЖА

TECNO NABUK | Classe 2 | H. 140

100% po



4267 C12



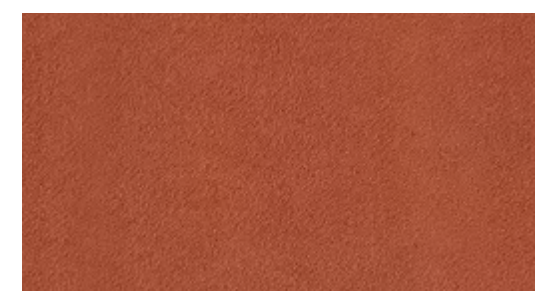
4267 C35



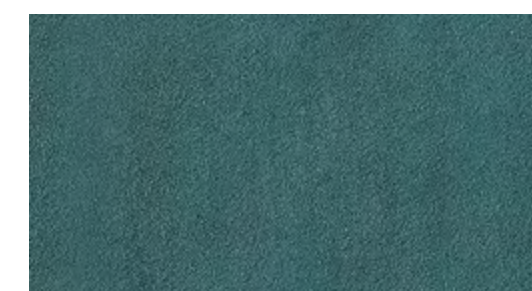
4267 C59



4267 C66



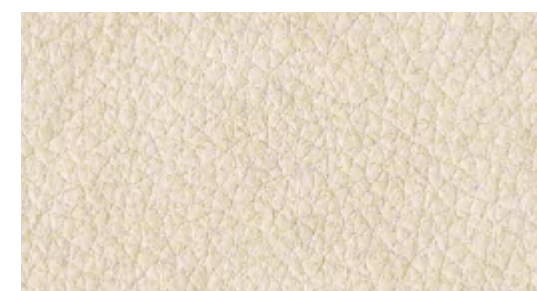
4267 C68



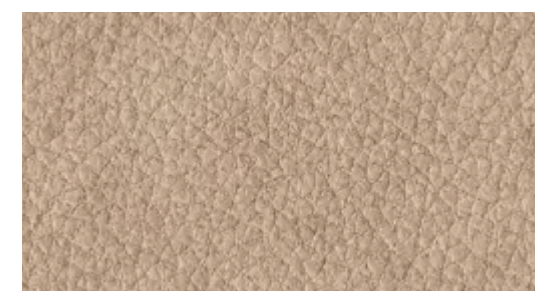
4267 C69

TECNO NABUK | Classe 3 | H. 140

66% PVC, 17% 17/cc



12570



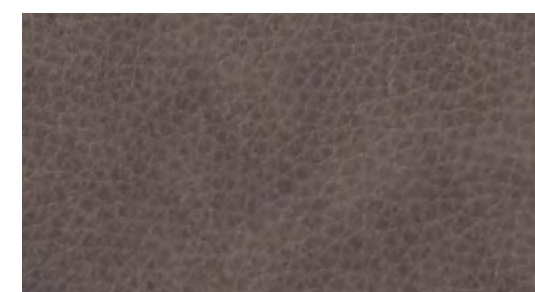
12571



12576



12572



12577

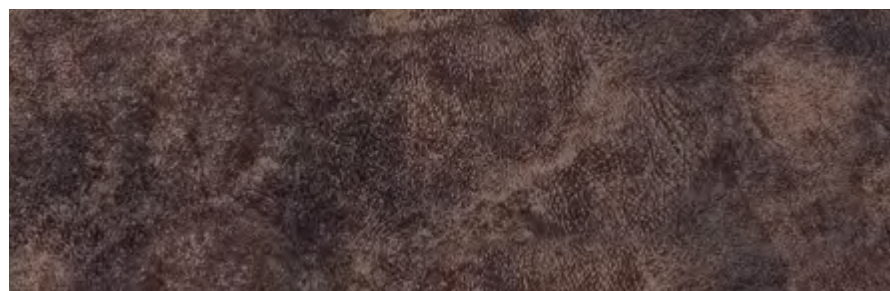
ECOPELLE - FAUX LEATHER - ИСКУССТВЕННАЯ КОЖА

ZORRO 4800 | Classe 3 | H. 140

60% Pelle/Leather, 40% PL



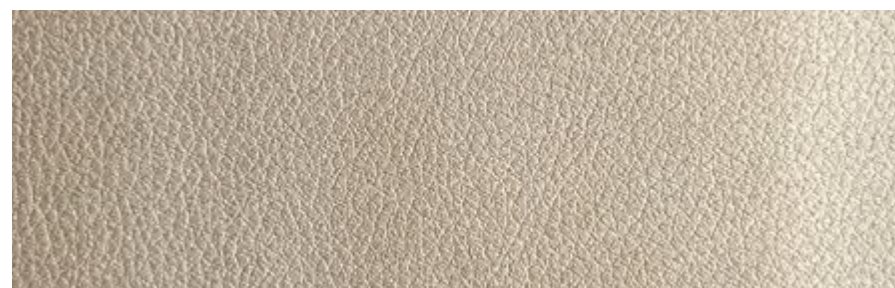
Col. 06



Col. 03

VESUVIO | Classe 3 | H. 139

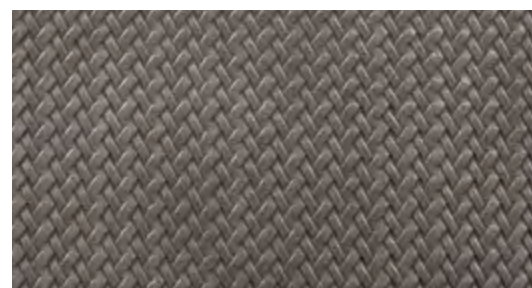
79% PVC, 15% co, 6% pu



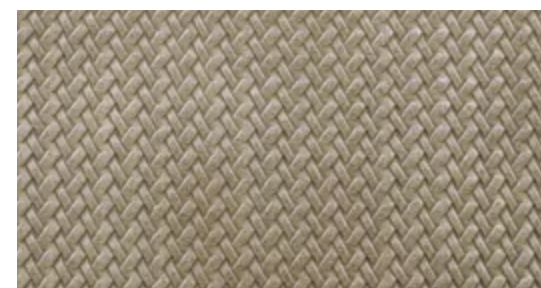
26017.02

MILANO CITY | Classe 3 | H. 137

65% PVC, 35% PL



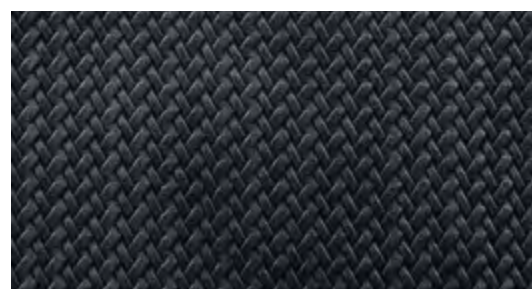
662/13



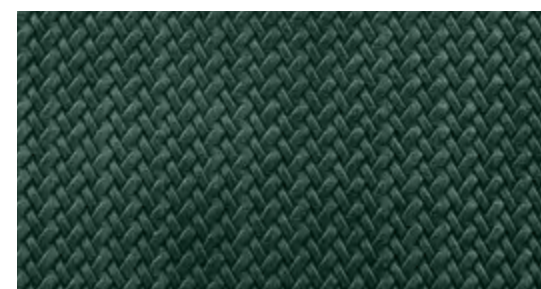
662/03



662/06



662/15



662/11